



Northumberland
County Council

Climate Change

Local Area Councils November 2019

www.northumberland.gov.uk

What Have We Committed To & Delivered?

- Declare a 'Climate Emergency' ✓
- Pledge to make Northumberland county carbon neutral by 2030 ✓
- Establish a committee of people rep' local groups to oversee the implementation plan ✓

What Have We Committed To?

Additionally we have committed to make a 50% reduction in council carbon emissions by 2025 and we will publish a project plan for our own aim for net zero emissions by 2030 before 2024.

Additionally

We will establish a Climate Change Commission. formed from a wide range of both academic, professional and business experts to provide independent strategic advice, guidance and feedback to the Steering Group and Council on their action and implementation plans.

Justification

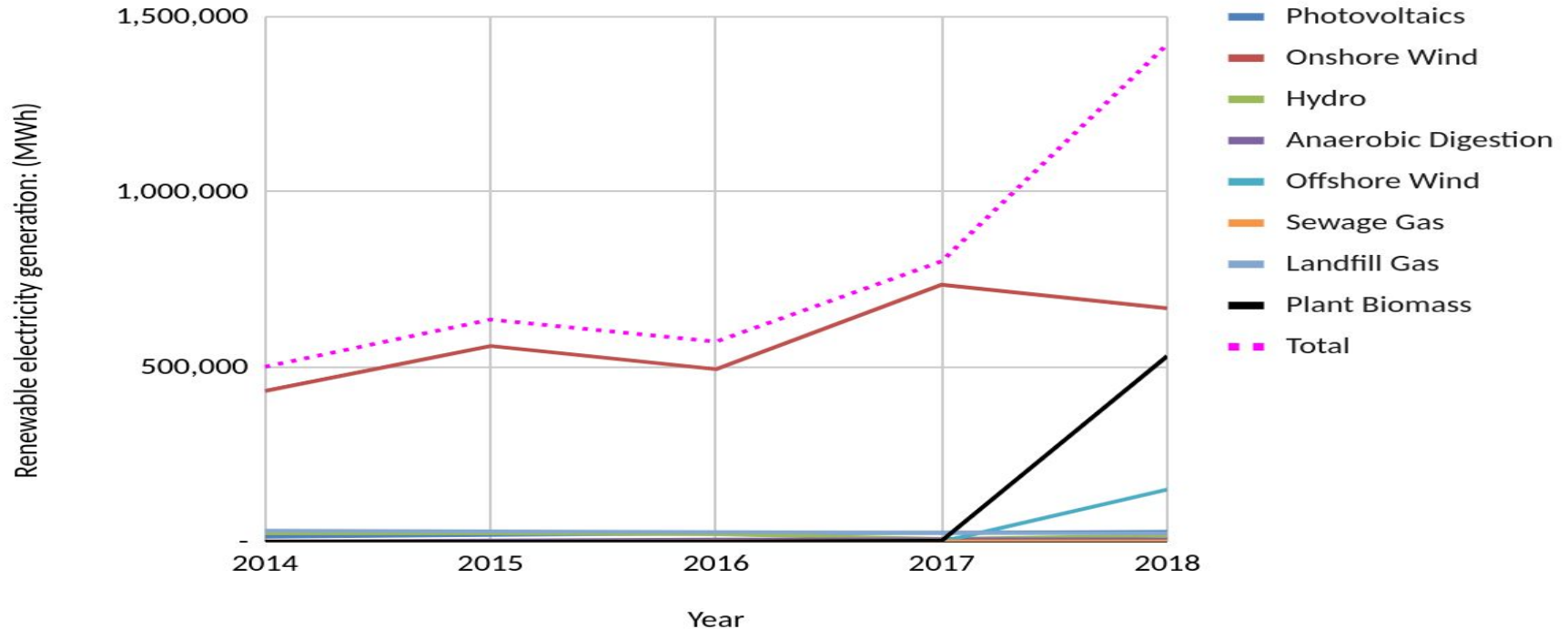
All age groups demand more climate actions, that net zero emissions should be achieved as soon as possible and that we are in the midst of a climate emergency

Emissions Are Falling 2010/11-2017/18

Northumberland County 4,251,000 now
1,855,000 tonnes CO₂

Northumberland County Council 53,942
now 36,347 tonnes of CO₂

Renewable Generation In Northumberland



What Have We Done?

- Air/ground source heat pumps over 70
- Solar PV over 1,000 installations
- Insulation roof and walls over 130
- These will continue

Before and After



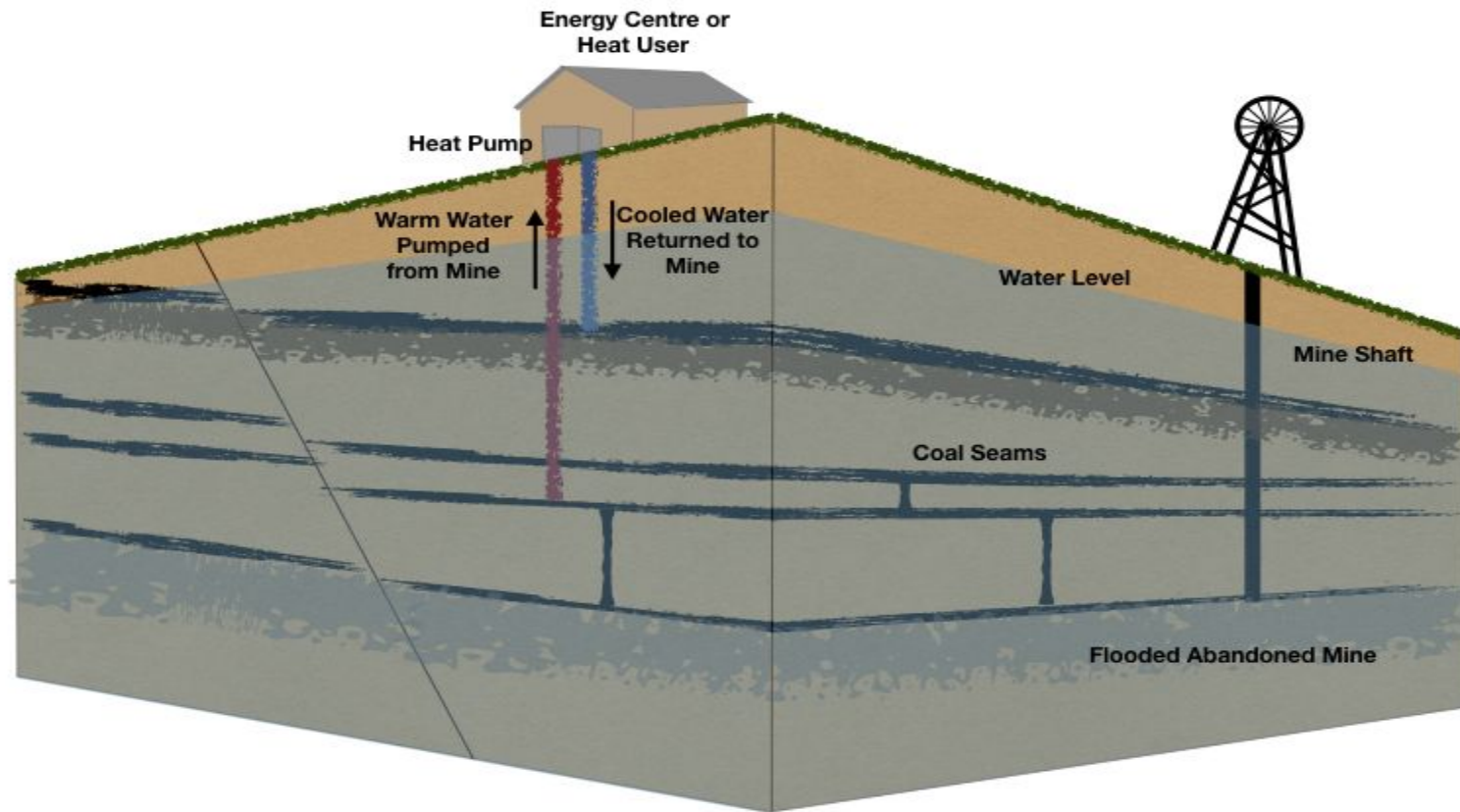
Summary Of More We Will Do

- Planned increase of solar PV of 2,000,000 kWh generation
- Potential hydro electricity 1,000,000 kWh generation
- Battery Electric Vehicles fleet vans/increased chargers deployed destination points



Summary Of More We Will Do

- Increased building management systems controls underway
- New builds will be far more energy efficient
- Blyth mine water/solar carport projects
- Continue to make energy efficiencies in housing



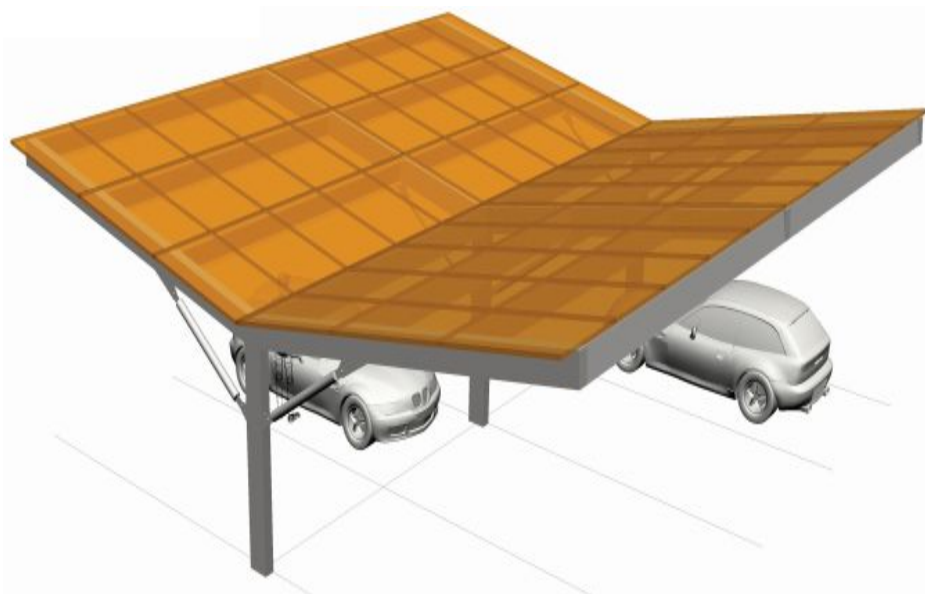
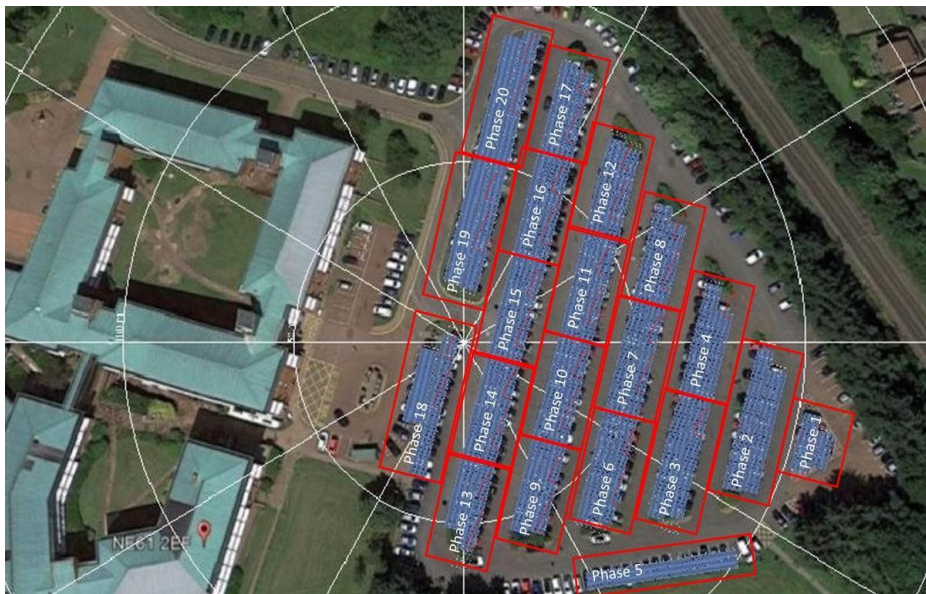
Renewable Energy Generation

Renewable energy can replace carbon intensive fuels such as coal, oil, diesel, petrol and gas in our electricity, heat and transport.

Renewable Electricity Generation



Renewable Electricity Generation Plus EV Charging and Storage

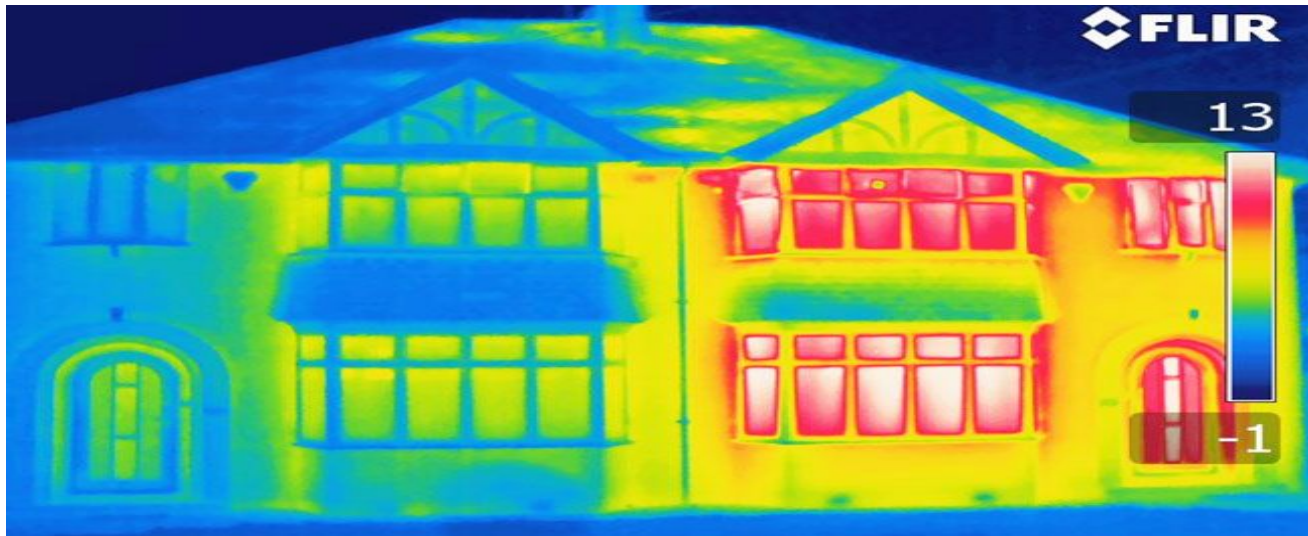


Energy Consumption

It is very important to reduce the amount of energy required while still providing for our needs - through increased energy efficiency, better controls/choices and in doing so reduce consumption.

Energy Consumption

Source and permission: Innovation & Research Focus (IRF) newsletter



Emissions Capture

- We will investigate supporting land use as a potential increase offset against greenhouse gases.
- There needs to be negative emissions in a net zero future
- Important to work with partners NNPA
- Secured £265k grant funding to plant 633 trees in urban areas (not saplings)

Policy

We will monitor the implementation of planning policy and other council policies to ensure climate change mitigation and adaptation along with investments in county low carbon economies are considered and continue

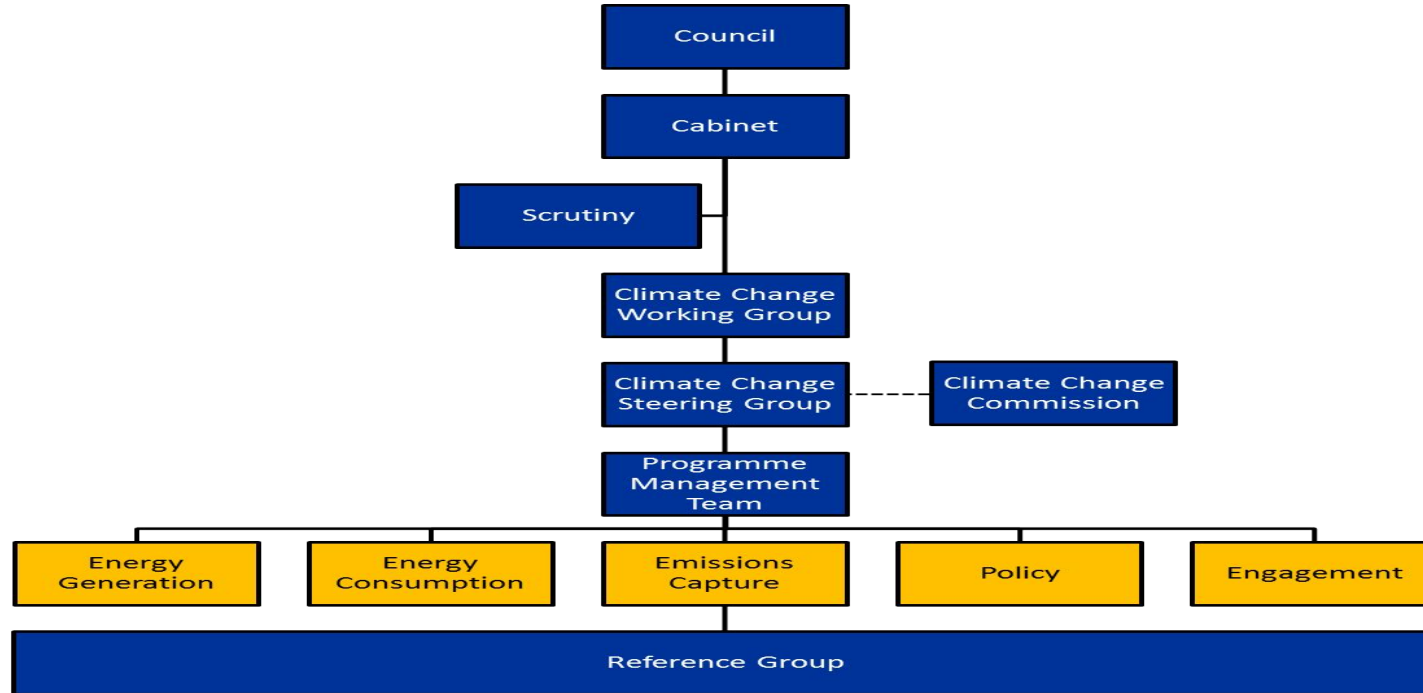
Policy to Promote Investment and Innovation



Engagement

- We will be engaging with partners, residents, businesses and communities providing information, discussions, communications and support, to lead to an increased adoption and understanding of both climate change behaviours and choices.
- We will continue to work with the Government.

Whole Approach To Governance



Supporting Cycling, Walking & EV



Waste - Avoid, Reduce, Reuse, Recycle



Generating Energy From Waste





Northumberland
County Council

climate@northumberland.gov.uk

www.northumberland.gov.uk